



# EID MUBARAK

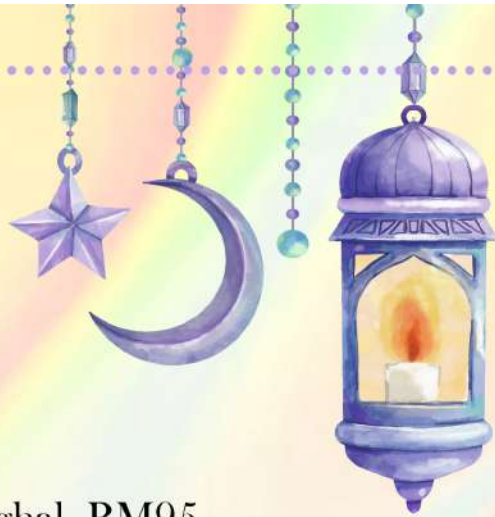
RAYA COLLECTION 2025



[WWW.GIFTLAB.COM.MY](http://WWW.GIFTLAB.COM.MY)

# Classic Hamper

COLLECTION



**Azemat RM145**  
Semperit Cookies 350g, Chocolate Nyonya Kapit 250g, Kuah Kacang 250g, Dodol Melaka 238g, Amazing Grace Blueberry Coconut Granola 40g, Sultana Fruit Cake 80g & Boh Seri Songket Passion Fruits Tea 2s.

25RB3

**Aghal RM95**  
Baklavas & Coconut Dates Delight 85g, Pure Honey 125g, Turkish Assorted Fruits Lokum 238g, Sultana Fruit Cake 40g & Boh Seri Songket Lychee with Rose 2s.

25RB1



**Ensaf RM160**  
Walnut Cookies 270g, Pistachio Nougat 125g, Boh Seri Songket Lemon Mandarin Tea 10s, Mixed Raisins 298g, Halia Cubes 168g, Mocha Fruit Cake 200g & Royal Danish Butter Cookies 105g.

25RB4



**Aramesh RM115**  
Almond Shreds Chocolate Nyonya Kapit 250g, Royal Danish Butter Cookies 105g, Pistachio Nougat 125g, Sultana Fruit Cake 40g x 2pc & Boh Seri Songket Lychee with Rose 2s.

25RB2



**Barkat RM198**  
Pure Honey 125g, Pineapple Tart 425g, Royal Danish Butter Cookies 105g, Kuah Kacang 250g, Boh Seri Songket Lemon Mandarin 10s, Pistachio Nougat 125g, Amazing Grace Pandan Coconut Pecans, Almond 30g, Amazing Grace Choc Hazelnut 40g, Halia Cubes 168g, Sultana Fruit Cake 80g.

25RB5





**Ebdid RM208**

Baklavas, Chocolate Dates Delight & Tamrieh Walnut Almond 180g, Pineapple Tart 200g, Turkish Fruits Lokum 238g, Sultana Fruit Cake 80g, Boh Seri Songket Lychee Rose 2s, Royal Danish Butter Cookies 105g, Pure Honey 125g & Pineapple Fruit 148g.

25RB6



**Esh RM238**

Safawi Jumbo 250g, Mocha Coffee 280g, Baklavas & Coconut Dates Delight 85g, Semperit Cookies 350g, Pandan Coconut Cookies 230g, Kuah Kacang 250g, Amazin' Graze Seaweed Almond, Cashews & Sunflower 30g & Meysu Pomegranate 1 litre.

25RB7



**Khales RM300**

Ajwa Jumbo Al-Madinah 200g, Rose Baklavas, Chocolate Coconut Dates Delight & Tamrieh Walnut Almond 180g, Godiva Roasted Almond Dark Chocolate 90g, Shana Strawberry Fresh Jam 310g, Homemade Traditional Pineapple Tarts 425g, Chocolate Chips Cookies 400g, Pistachio & Arabic Apricot Nougat 125g, Pineapple Fruit Slice 148g, Boh Seri Songket Earl Grey with Tangerine Tea 10s.

25RB8

**Mobark RM328**

Baklavas, Choco Dates Delight & Tamrieh Walnut Almond 180g, Kelantanese Serunding 108g, Kurma Safawi 250g, Snow Almond Cookies 230g, Chocolate Nyonya Kapit 250g, Strawberry Jam 310g, Dodol Melaka 238g, Soft Figs 148g, Chocolate Wafer 120g, Pure Honey 125g & Boh Seri Songket Lemon Mandarin 10s.

25RB9



**Mohbub RM500**

Ajwa Jumbo 200g, Godiva Signature Choc 90g, Baklavas, Chocolate Dates Delight & Tamrieh Walnut Almond 180g, Pineapple Tart 200g, Semperit Cookies 350g, Pandan Coconut Cookies 230g, Ole Ole Chocolate Chips with Raisins 105g, Pure Honey 500g, Pistachio Nougat 125g, Blackberry Jam 310g, Boh Seri Songket Lemon Mandarin Tea 10s, Soft Figs 148g, Raisins 298g & Kain Pelikat Mangga Gold.

25RB10

# Premium Hamper

## COLLECTION



**Motabar RM568**

Patchi Chocolates 108g, Dragee - Choc, Almond & Fruits 180g, Blueberry Tart 470g, Ajwa Jumbo 200g, Amazin' Graze Antioxidant Berry Mix 130g, Soft Figs 148g, Pistachio Nougat 125g, Walnut Cookies 270g, Kuah Kacang 250g, Pineapple Fruit 148g, Pomegranate Juice 1 litre & Boh Seri Songket Lemon Mandarin Tea 10s.

25RB11

**Moteoban RM628**

Assorted Fruit, Choc & Nuts Cream Betty Four 360g, Whittard Stem Ginger Lemon Biscuits 150g, Whittard Hazelnut Hot Chocolate 350g, Godiva Almond Choc 90g, Godiva Seasalt Dark Choc 90g, Pineapple Tart 200g, Choc Nyonya Kapit 220g, Pomegranate Cold Pressed 100% 930ml, Strawberry Jam 310g, Mocha Coffee 280g, Carrot Walnut Cake 350g, Pistachio Nougat 125g & Kain Pelikat Mangga Gold

25RB12



**Moodab RM700**

Kurma Ajwa Jumbo 200g, Rose Baklavas, Choc Dates Delight & Tamrieh Walnut Almond 180g, Patchi Chocolates 108g, Walnut Cookies 270g, Pineapple Tart 425g, Semperit Cookies 350g, Chocolate Chips w Raisins 105g, Pure Honey 500g, Pistachio Nougat 125g, Whittard Elderflower & Apple Tea 20s & Kain Pelikat Mangga Gold.

25RB13

**Rahmat RM800**

Whittard Triple Chocolate 150g, Whittard Elderflower Apple Tea 20s, Whittard Hot Chocolate 350g, Carrot Walnut Cake 350g, Assorted Fruit, Choc & Nuts Cream Betty Four Pastries 360g, Godiva Chocolate Almond 90g, Dragee - Choc, Almond & Fruits 180g, Honestly Crunchy Peanut Butter 350g, Amazin' Graze Hazelnut Blackforest Granola 250g, Amazin' Graze Banana Pecan Muesli 300g, Strawberry Jam 310g, Almond Biscotti 168g, Sweet Apricot 140g, Soft Figs 148g, Pistachio Nougat 125g & Pineapple Tart

25RB14



### Rayabri RM1090

Patchi Chocolate 108g, Godiva Almond Choc 90g, Godiva Signature 90g, Ajwa Jumbo Al-Madinah 200g, Dragee 180g, Whittard Triple Chocolate 150g, Whittard Elderflower & Apple Tea 20s, Whittard Hot Chocolate 350g, Carrot Walnut Cake 350g, Chocolate & Nuts Cream Betty Four Pastries 360g, Serunding 108g, Pomegranate Cold Pressed 100% 930ml, Honestly Crunchy Peanut Butter 350g, Amazin' Graze Hazelnut Blackforest 250g, Amazin Grace Banana Pecan Muesli 300g, Raspberry Jam 310g, Soft Figs 148g & Walnut Cookies 270g.



25RB15

### Sadegi RM1399

Patchi Chocolate in Baroque Silver Tray 338g, Assorted Fruit, Choc & Nuts Cream Betty Four 360g, Whittard Hazelnut Hot Chocolate 350g, Whittard Stem Ginger Lemon 150g, Whittard Classic Peach, Raspberry & Rose Tea 20s, Dragee - Chocolate, Almond & Fruits 180g, Wild Blueberry Tart 470g, Pineapple Cookies 425g, Snow Almond Cookies 230g, Choc Nyonya Kapit 250g, Sweet Apricot 140g, Amazin Graze Hazelnut Blackforest Granola 250g, Carrot Walnut Cake 350g & Honestly Crunchy Peanut Butter 350g.

25RB16



### Saleh Patchi RM1500

Patchi Chocolates 1.2kg in an intricate keepsake Porcelain Tray measuring 35cm x 24cm x 15cm.

25RD8

### Patchi Exquisite RM2090

Patchi Chocolate 1.28kg on a luxurious silver-plated decorative tray

25RD16



# Ramadan Favorites

COLLECTION



**Mivel Kurma RM165**  
Safawi Kurma Jumbo 360g

25RD1

**Shirin Ajwa RM208**

Kurma Ajwa Jumbo & Ferraro Rocher 348g

25RD3



**Patchi Sheklat RM588**

Patchi Chocolates 220g

25RD3



**Patchi Sheklat RM588**

Patchi Chocolates 338g

25RD4



**Patchi Sheklati RM668**

Patchi Chocolates 360g in Galipoli Glass (10.5cm x 18cm H).

25RD6



**Godiva Shadi RM245**

Godiva Crispy Hazelnut Choc 123g in Galipoli Glass (10.5cm x 18cm H).

25RD5



**Godiva Shadi RM245**

Whittard Luxury Hot Chocolate 350g, Godiva Crispy Hazelnut Chocolate 4pcs, Honestly Peanut Butter 350g, Dragee - Chocolate, Almond & Fruits 180g, Apricot 140g, Boh Seri Songket Lemon Mandarin 10s, Almond Biscotti 168g, Pineapple Fruit Slice 148g, Kiwi Fruits 148g & Sultana Fruit Cake 80g.

25RD10



### Ramadan Piruzi RM298

Godiva Crispy Hazelnut Chocolate 5pcs, Godiva Roasted Almond 90g, Godiva Seasalt Dark 90g, Baklavas & Coconut Dates 85g, Almond Biscotti 168g, Fruit Kiwi 148g, Pure Honey 125g, Amazing Grace Blueberry Granola 40g and Boh Seri Songket Lychee 2s.



25RD9

### Sadiq RM250

Chocolate & Coconut Dates Delight, Baklavas, Almond & Cashew Tamrieh, Asieh Pistachios, Maamoul Walnut Dates.

24RD1



### Shakir RM248

Kurma Medjool Jumbo, the Fruit of Kings 24pcs

24RD2

### Shujae RM298

Ramadan sweet pastries 668g. Chocolate Rose Baklavas, Almond & Cashew Tamrieh, Walnut Finger Baklavas & Asieh Pistachios. Silver Tray 30cm x 22cm x 4.5cm.

24RD3



### Tharwa RM325

Ramadan Savories 725g - Belgian Chocolate & Coconut Dates Delights, Almond & Cashew Tamrieh, Walnut Baklavas & Asieh Pistachio. Porcelain measures 35cm x 24cm x 15cm.

24RD4



# Raya Gifts

## COLLECTION



### Corelle Ethereal RM408

Corelle Carafe Set 5pcs. Made from Natural Soda Lime Glass, set includes 4pc of see through intricate 340ml Glass Mugs and an elegant Glass Carafe. Gift comes with Kurma Ajwa Jumbo 200g.

25RD11



### Corelle Enchanting RM439

Corelle Carafe Tableware 5pc Set. Gift comes with Baklavas & Dates Delight 85g, Pineapple Fruit Slice 148g & Dodol Melaka 238g.

25RD12



### Corelle Luxurious RM768

Corelle Luxurious Tableware 9pc Set - 4pcs of see through Glass Mugs 340ml, an elegant Glass Carafe made from Natural Soda Lime Glass, Corelle Sakura Dinner Plate 2pcs and Corelle 500ml Cereal Bowl 2pcs.

25RB13

### Corelle Timeless RM2380

Corelle Timeless Dinnerware 23pc Set - Corelle Sakura Dinner Plate 6pcs, Corelle Sakura 21cm Soup Plates 6pcs, Corelle 500ml Cereal Bowl 6pcs, 4pcs of see through Glass Mugs 340ml & an elegant Glass Carafe made from Natural Soda Lime Glass. Comes with Kurma Ajwa Jumbo 200g, Whittard Hazelnut Hot Chocolate 350g, Godiva Almond Dark Choc 90g, Godiva Seasalt Choc 90g & Blueberry Tart 470g.

25RD14





# Raya Flowers & Fruits

COLLECTION



Patchi Velvety RM1238

Patchi chocolates 738g on Silver plated Tray measuring 22cm x 43cm.

25RD15

Salam Patchi RM965

Patchi Chocolates 688g in Porcelain Tray measuring 35cm x 24cm x 15cm



25RD12



Niloofar RM288

For more selections of our Raya Flowers & Fruits Gift, check out [www.giftlab.com.my](http://www.giftlab.com.my) Price starts from RM150

19RF4



# Ordering, Payment & Delivery

Please email order to [sales@gift-lab.com](mailto:sales@gift-lab.com) or order via online at [www.giftlab.com.my](http://www.giftlab.com.my)

Customer Care : **+603-78830233 / +6012-6915200**

MBB 5141-7843-0949

CIMB 800151 4962

Pods & Petals Giftlab (M) Sdn Bhd

**ORDER BY**

Personal Order     Company Order

Company Name \_\_\_\_\_ Contact Person \_\_\_\_\_

Billing Address \_\_\_\_\_

Email \_\_\_\_\_

Tel No. (H/P) \_\_\_\_\_ (H) \_\_\_\_\_ (O) \_\_\_\_\_

Fax \_\_\_\_\_ Date of Order \_\_\_\_\_

Company Stamp \_\_\_\_\_ Signature \_\_\_\_\_

(If this is a company order, please affix company stamp)

**GIFT ORDER INSTRUCTIONS**

Recipient Name \_\_\_\_\_

Tel No. (H/P) \_\_\_\_\_ (H) \_\_\_\_\_ (O) \_\_\_\_\_

Address \_\_\_\_\_

Delivery Date / Delivery Before \_\_\_\_\_ Time [ ]am [ ]pm [ ]anytime

Message \_\_\_\_\_

From \_\_\_\_\_

Product Code	Description	Unit Price	Qty	Total

*You may continue on a new list of photocopied form if you have more than 1 recipient.*

If you wish to collect the hampers from our office.

Total amount to be paid:

RM

**Payment Method**

- Cash             Visa
- Mastercard     Maybank2u
- Amex

**If payment by card**

Card No: \_\_\_\_\_

Expiry Date: \_\_\_\_\_

Security Code: \_\_\_\_\_

Cardholder's Name & Signature: \_\_\_\_\_

Opening Hours: **Monday to Friday: 9am-7pm | Saturday & Sunday: 9am-3pm**

**NATIONWIDE DELIVERY**

Free delivery service within 12km radius in Klang Valley. Except for fresh flowers where delivery is via our nationwide associates, all gift packages and hampers are delivered via courier service for out of Klang Valley location. A minimum surcharge of RM15 applies for delivery out of our free delivery zone in Klang Valley. Charges will depend on package size and weight. Check with our Customer Care at 03-78830233 / 012-6915200 for exact charges.

**DELIVERY TIME**

- Non-festive orders received before 12:00 PM can be delivered the same day.
- Non-festive orders received after 12:00 PM will be delivered the following day earliest. For urgent delivery, kindly contact our Customer Service for same-day delivery confirmation.
- For festive orders, delivery will be made within a 7-day timeframe where the specified date selected by the customer will be the last date for the delivery schedule. Priority will be given to customers who have placed their orders earlier, and all orders will be sent on a first-come, first-served basis.
- Outstation orders will be subject to the time, delivery schedule, and terms stipulated by the selected courier company.

**PAYMENT**

All personal orders must be charged to a credit card, via Maybank2u, PayPal, or paid in cash prior to delivery. All corporate orders with approved credit facilities from Giftlab must be emailed to us at [sales@gift-lab.com](mailto:sales@gift-lab.com)

**UNAVAILABILITY OF PRODUCTS**

In the event that flowers or products are not available at the time of orders, Giftlab reserves the right to substitute them with similar products of equal or greater value.

**CUSTOMIZED ORDER**

We will create hampers, gift packages, and brand personalization for customers with special requirements. Applicable for total orders above RM2K.

